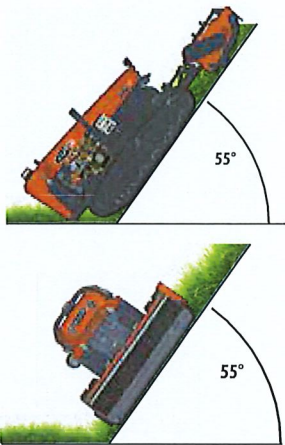


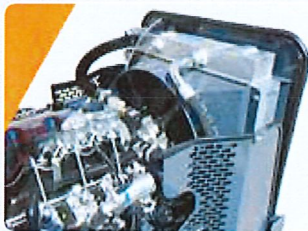
# FERRI®

SIMPLY. THE MOWER

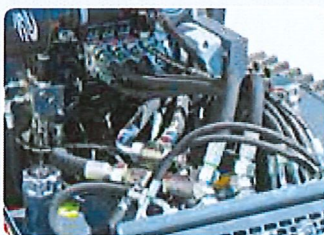
# iCUT4.50 extra



Inclination. Thanks to an optimal weight distribution and a low center of gravity, iCut 4.50 is able to operate with lateral and frontal slope angles up to 55°



Engine. Thermal diesel Isuzu 4-cylinder naturally aspirated 2.179 cc from 37,3 kW/50 HP.



Hydraulic system. The iCUT4.50 works with the hydraulic system based on 4 pumps with independent circuits.



Intuitive console with display.

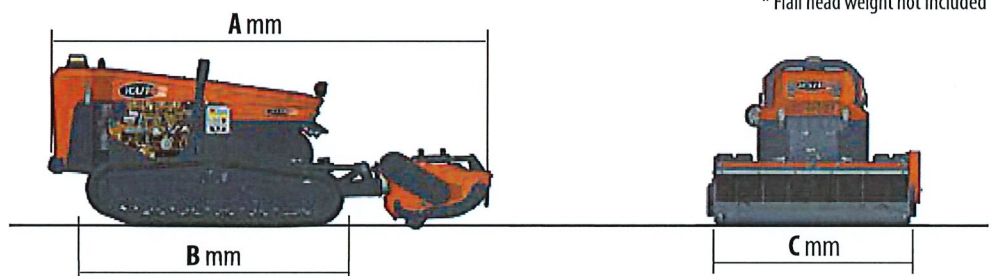


## REMOTE CONTROL TOOL CARRIER

The iCUT4.50 model is the leading remote controlled tool carrier machine that guarantees maximum safety in critical and difficult situations achieving superb performances.

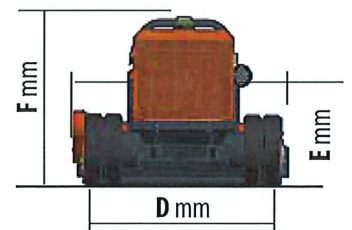
Modello	HP	mm	cc	kg*	Mod.	∠°
iCut 4.50 Extra	50	1340-1670	2.179	1.215	R1300	55°
iCut 4.50 Extra	50	1340-1670	2.179	1.215	R1700	55°
iCut 4.50 Extra	50	1340-1670	2.179	1.215	RF1300	55°
iCut 4.50 Extra	50	1340-1670	2.179	1.215	RF-R1300	55°

\* Flail head weight not included



A* mm	B mm	C mm	D mm	E* mm	F* mm
3.020	1.740	1.340	1.350	1.480	1.155
		1.670			

\* R 1300



### TECHNICAL INFORMATION

Model	Displacement pistons pumps	Hydraulic Oil	Oil flow*	Max flail head motor pressure	Oil tank
	Type	Litri (gal US)	l/min (gpm)	Bar	Litri (gal US)
iCut 4.50 Extra	Closed circuit variable displacement pistons	40 (8,80)	60 (15.85)	300	9 (1,98)